

Banking on PacketLight for DCI for Financial Institution

The Case of Salumanus

At a Glance

Company: Salumanus

Location: Poland

Industry: Distributor and Integrator

Challenge:

Build a DCI network for a bank, that is modular, cost-effective, low latency and with Layer-1 encryption.

Solution:

Salumanus deployed PacketLight's PL-2000ADS 200G muxponder/transponder for short haul networks. The solution provides high speed, low latency, and embedded Layer-1 encryption.

Success:

The network was deployed remotely in record time, under strict regulations due to the COVID-19 pandemic. The network answered all the bank's needs for high capacity, low latency, secure network.

Background

Salumanus is a distributor and provider of network infrastructure solutions in the field of networks and telecommunications. Salumanus specializes in providing network infrastructure for data transmission in fiber optic, wireless and copper-based networks. Their partners include the largest telecom companies in Poland, IT system integrators, ISPs and data centers.

Challenge

A major bank in Warsaw, Poland needed to connect two critical data centers across 15 km. The solution needed to be modular, cost-effective and meet the highest security standards to encrypt sensitive data across the fiber, with pay-as-you-grow architecture for easy and fast future growth.

Solution

Salumanus deployed PacketLight's PL-2000ADS 200G ADM for short haul to build the DCI backbone with secure data transport between the bank's branches.

The PL-2000ADS high capacity solution transports up to 200G by aggregating a mix of services such as 10/40/100Gb Ethernet, 8G/16G/32G FC, OTU2/2e and OTU4 into dual 100G OTU4 uplinks.

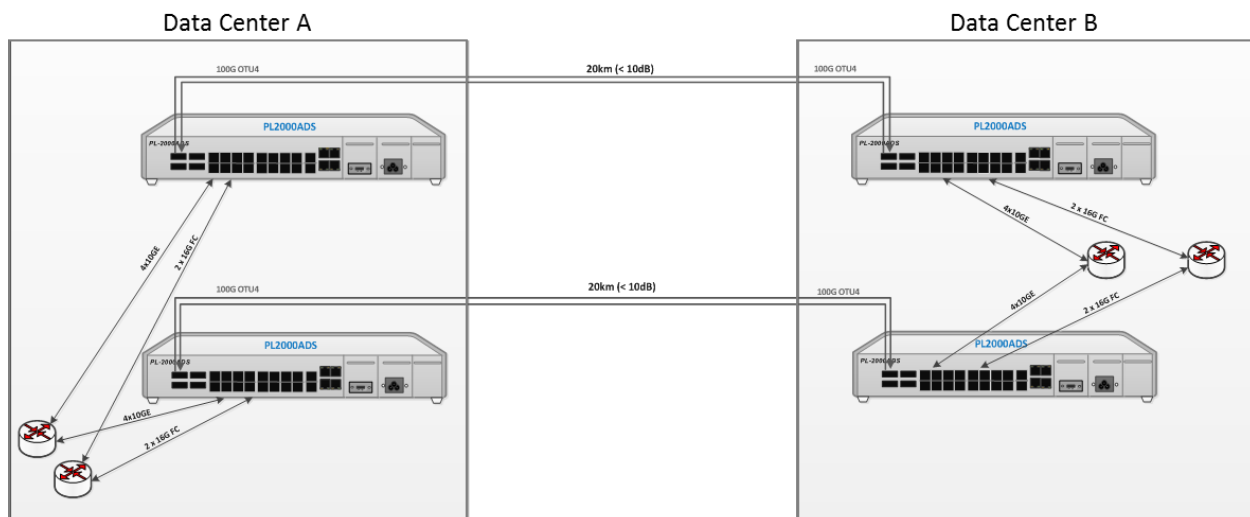
PacketLight’s embedded Layer-1 encryption solution is FIPS 140-2 Level 2 certified, and provides GCM-AES-256 cryptography and key exchange based on the Diffie-Hellman (DH) protocol, with full throughput and without compromising performance.

The low latency solution is modular and cost-effective, with has real pay-as-you-grow architecture - ready to support 40Gb Ethernet and 32G FC in the future.

Success

With PacketLight’s intuitive solution, Salumanus was able to complete the deployment, remotely, in record time, under strict regulations due to the COVID-19 pandemic.

“PacketLight’s solution met our strict requirements for a solution that delivers low latency, the very best physical layer security, and allowed our client to cost-effectively grow at their own pace,” said Marcin Bala, CTO at Salumanus. “Due to regulations surrounding COVID-19 that restricted our team’s ability to be on-site, the deployment would’ve been challenging if not for our ability to work together to provide our client with remote training for operation, configuration, monitoring and detailed instruction to help them deploy the system on their own.”



Typical DCI Network Diagram