

Connecting Two Data Centers over Dark Fiber

The Story of Netcompany

At a Glance

Company: Netcompany

Location: Denmark

Industry: IT consultancy and solution/service hosting

Challenge:

Netcompany needed to light up their dark fiber and connect two data centers. The link required encryption and low latency.

Solution:

PacketLight's 200G Single Wavelength Muxponder was selected. The device supports encryption, multi rates and protocols, and low latency.

Success:

Netcompany successfully connected the two data centers over the 15 km distance, enabling them to improve their services and offerings.

Background

Netcompany is a publicly traded (Nasdaq Copenhagen: NETC) international IT consultancy company based in Denmark that builds, maintains, and hosts business and socially critical solutions, mainly for large privately held companies and government agencies.

Netcompany employs more than 2000 staff in its offices in Denmark, United Kingdom, Norway, The Netherlands, Poland and Vietnam.

The Challenge

Netcompany needed stable solution to connect two data centers in Denmark over a pair of dark fibers at a distance of 10-15 km. The solution needed to support encryption, multiple rates and protocols, and low latency.

In addition, Netcompany required the solution to be cost-effective, as multiple fibers and optics would be too expensive.

The Solution

PacketLight's PL-2000M modular 200G Single Wavelength Muxponder was a perfect fit to meet Netcompany's requirements. The carrier-grade solution has embedded Layer-1 encryption and supports 10Gb and 40Gb Ethernet, and 16G Fibre Channel in an easy to configure 1U chassis.

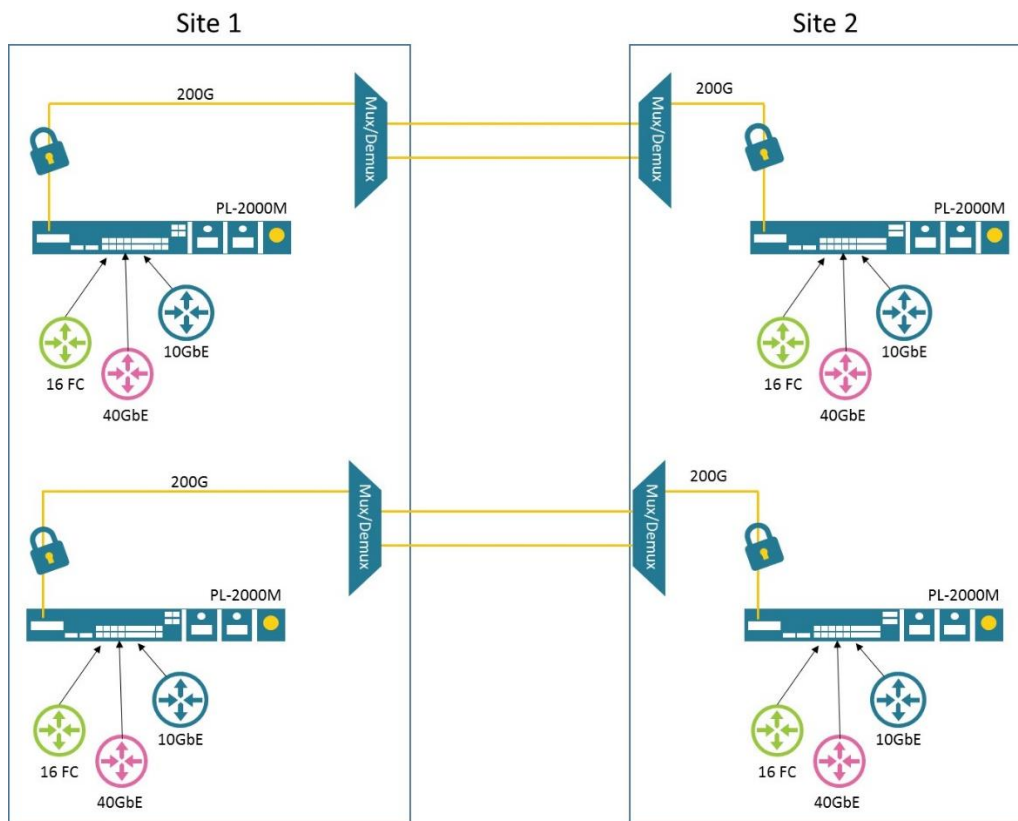
Success

Netcompany successfully operates a stable IT network over PacketLight infrastructure, with dedicated SAN and LAN wavelengths.

The modularity of the PL-2000M offers Netcompany pay-as-you-grow architecture to increase capacity of their network should they wish to upgrade at a later stage.

Sören Jensen, Principal at Netcompany:

“Communication with PacketLight is good. We get the support we need and we experience talented people at PacketLight. If we need attention, we just phone them. If we need onsite support then it can be arranged quickly. HW is stable and running without problems. We know for a fact that our PacketLight HW is able to run in very hot conditions.”



Network Diagram – DCI Connection with Encryption and Full Redundancy

